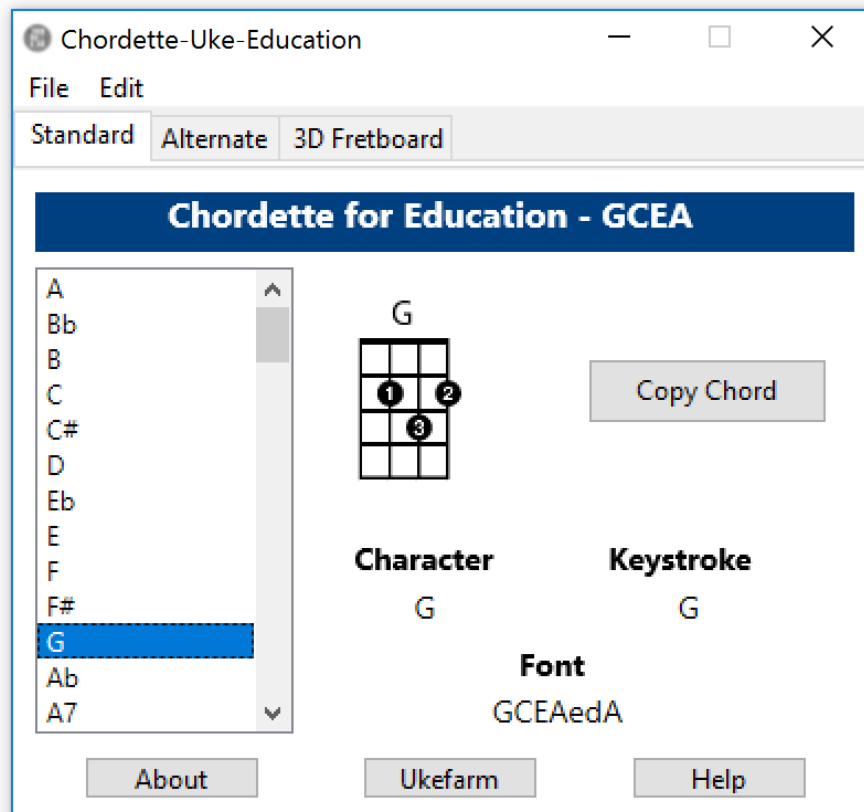




# UKEFARM

## CHORDETTE FOR EDUCATION

Chordette for Education is a ukulele chord library program created specifically for schools and individual instructors. It can be used for creating song sheets, presentations, or adding chords to videos. This education version has a basic chord set for beginners, featuring finger numbering, alternate chords, and 3D chords.

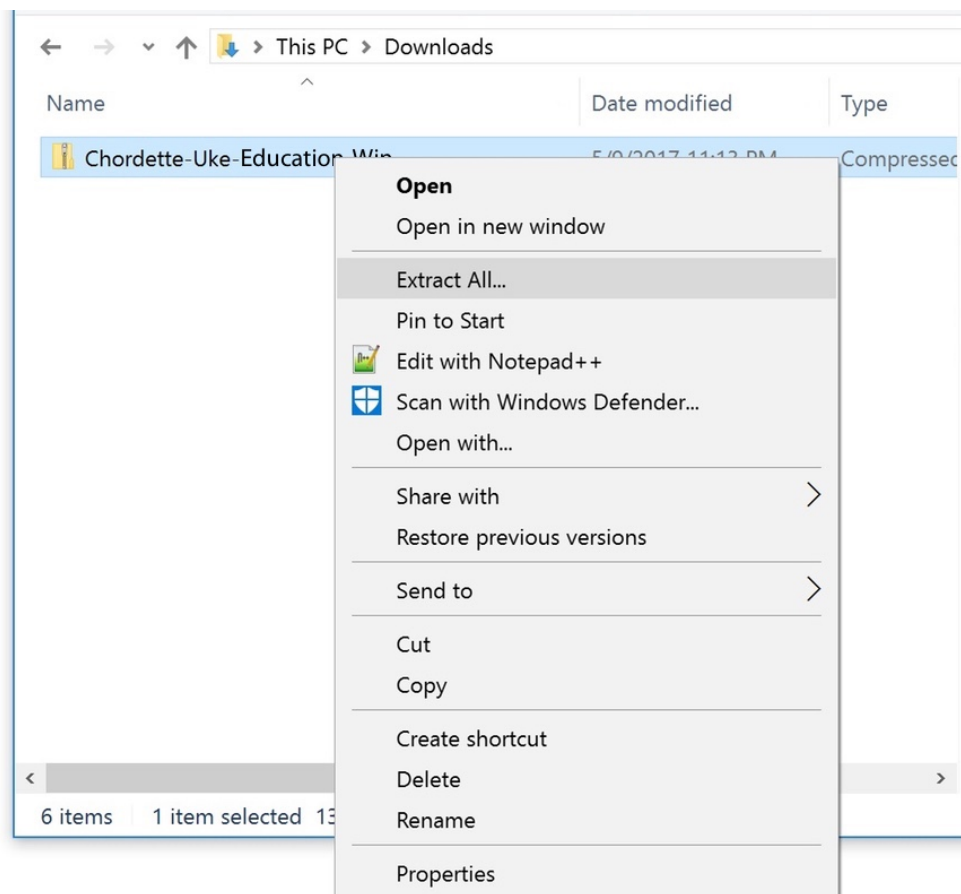




# UKEFARM

## INSTALLATION for WINDOWS

Chordette for Education for Windows is distributed as a zip file named Chordette-Uke-Education-Win. After you download the zip file, right-click on the file and select Extract All...





# UKEFARM

You will be asked to select a destination for the files.

←  Extract Compressed (Zipped) Folders

## Select a Destination and Extract Files

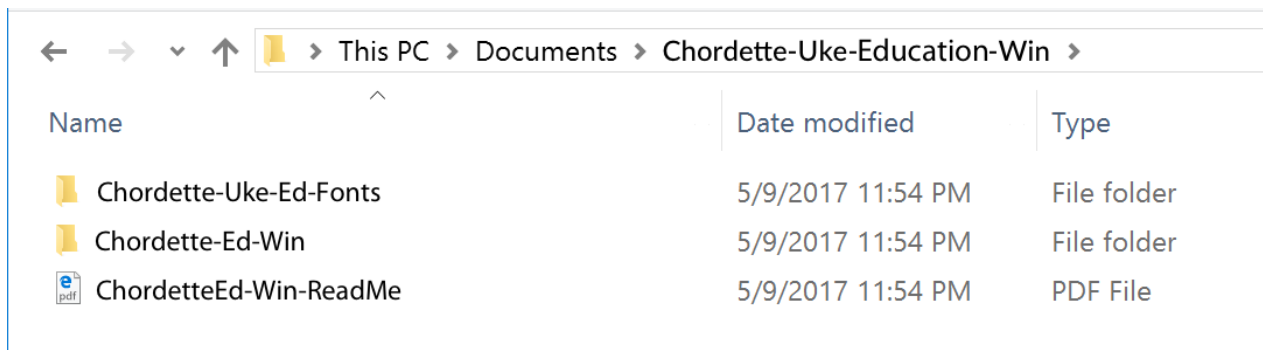
Files will be extracted to this folder:


C:\Users\Directory\Documents\Chordette-Uke-Education-Win




Browse...

Show extracted files when complete

The zip file will be extracted to the destination you chose. There will be a folder named Chordette-Ed-Win. Open the folder to view the contents.



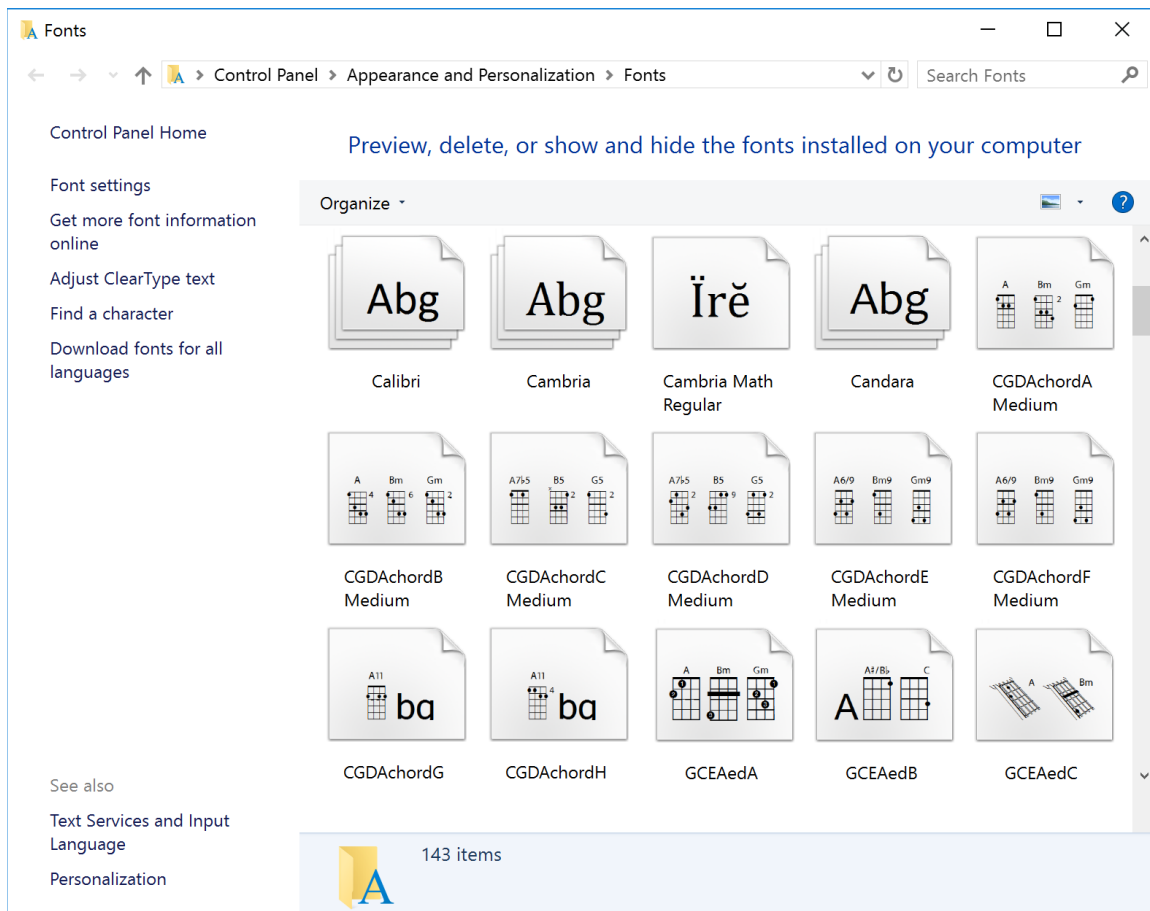
← → ▾ ↑  > This PC > Documents > Chordette-Uke-Education-Win >

Name	Date modified	Type
 Chordette-Uke-Ed-Fonts	5/9/2017 11:54 PM	File folder
 Chordette-Ed-Win	5/9/2017 11:54 PM	File folder
 ChordetteEd-Win-ReadMe	5/9/2017 11:54 PM	PDF File



# UKEFARM

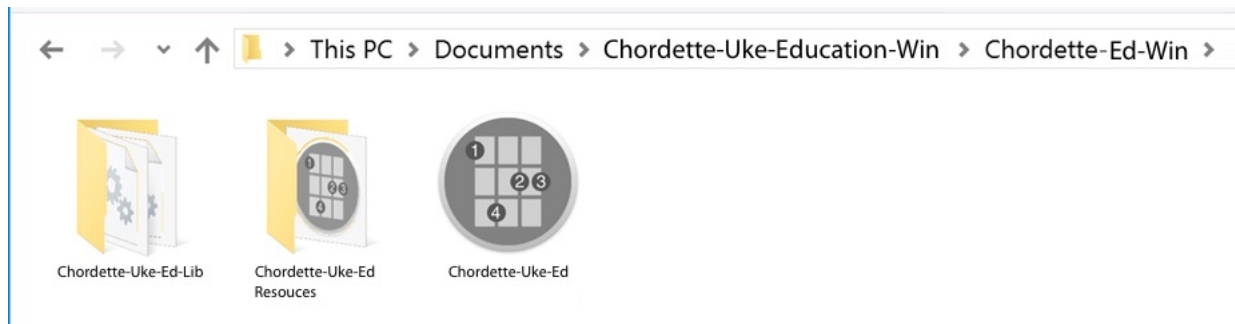
The next step is to install the custom fonts. Chordette requires three custom chord fonts, which are included with the application. It is important to install the fonts before opening the Chordette for Education app, or else you will just see alphanumeric characters displayed rather than the chords. Open the Chordette-Uke-Ed-Fonts folder. In Windows 10, access the font control panel. Click in Windows 10's Search field (located just to the right of the Start button), type "fonts," then click the item that appears at the top of the results: Fonts - Control panel. Drag each custom chord font to the main window. When you drop the font, you'll see a brief "installing font" message. If you are using an older Windows version and need help, google font installation for your operating system version.



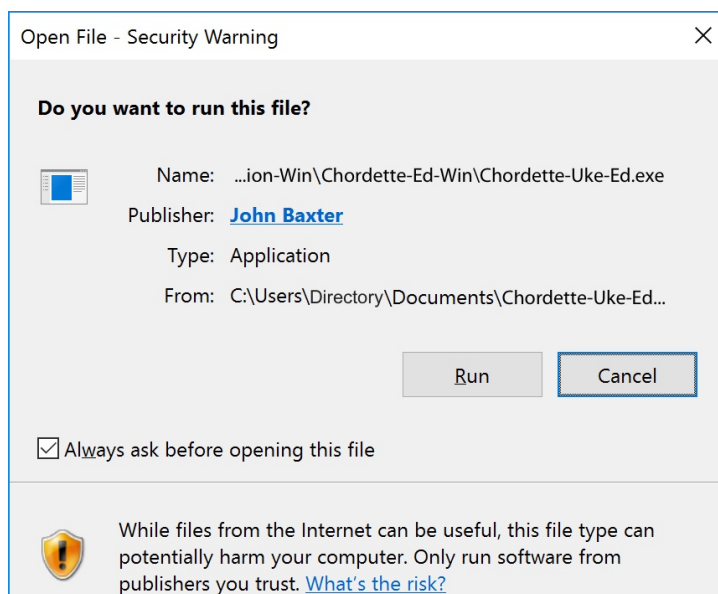


# UKEFARM

The Chordette-Ed-Win folder contains the Chordette-Uke-Education app and two additional folders. This folder can be located where you choose. It does not need to be in your Applications folder, but you must keep the Chordette-Uke-Education app inside the Chordette-Ed-Win folder with the other two folders.



The first time you run the app you will get a run file dialog. Chordette for Education has been code signed to ensure that the app has not been tampered with. Any modifications to the app will invalidate the code signature and alert you that the publisher is unknown. It is recommended that you retain the zip file as a backup.





# UKEFARM

## CHORD GROUPS

Standard

Alternative

3D Fretboard

### Standard

Major

7th

Minor

min7

maj7

dim7

aug

### Alternative

Misc alternative chords

Note diagrams

### 3D Chords

Major

7th

Minor

min7

maj7

dim7

aug

icons (Mac-color only)

## USING CHORDETTE for EDUCATION

The easy way to enter chords is to use the Copy Chord button.

### COPY CHORD BUTTON

When entering chords using the Copy Chord button, place your cursor where you want the chord to be inserted. After clicking on the Copy Chord button, either select paste from your app menu, or use your computer keyboard shortcut. You may need to resize the chord for your formatting preference.

Windows - Ctrl + v



---

# UKEFARM

## KEYBOARD CHORD ENTRY

1. Open a word processing app.
2. Select the font in the word processing app that relates to the desired chord. The font will be displayed under the Font label in the Chordette for Education app.

**NOTE:** Some versions of word processors display the chord name in the style of the font. This will result in the font names being shown as a string of chords. You may not be able to disable this feature. If so, look for a menu item that provides an alternative view for fonts. For Example, Pages for Macintosh displays the fonts in the Format sidebar as the style of the font, but has a Show Fonts menu under the Format menu at the top of the Mac screen that displays the fonts by name.

3. Select the desired font size in the word processing app.
4. Place the cursor in the word processor app where you want to insert the chord. Type the keystroke that is displayed in the Chordette for Education app for the desired chord. For example, "A" will enter an A chord for Group A chords. Typing "Q" will enter a Cmaj7 chord.